

Pannarase Salt Active Nuclease

Product Introduction

Pannarase Salt Active Nuclease(SAN) is a non-specific endonuclease that degrades any form of DNA and RNA (linear, circular, supercoiled) into 3'-mononucleotides and dinucleotides. This nuclease can maintain high bioactivity under broad salt concentrations and alkaline pH conditions.

Product Advantages

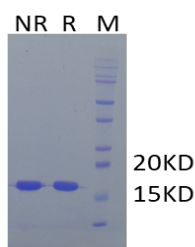
- Animal origin-free, without ampicillin
- Advanced manufacturing process, non His-tag, exclusion of metal ion risk
- Higher salt tolerant (0–500 mM NaCl), broad pH range (7.0–11.0)
- Strict quality control criteria to ensure unit enzyme activity and batch-to-batch stability

Product Application

Remove of nucleic acids at high Na⁺ concentration and high pH environment

Test Data

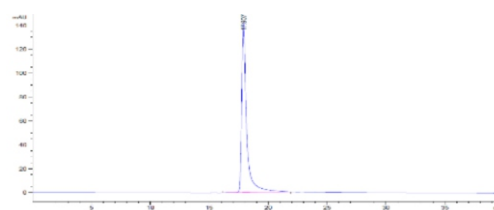
1. SDS-PAGE purity determination



SDS-PAGE electropherograms

Non-reduced and reduced SDS-PAGE result showed that molecular weight of IL-15 Pro was about 15 kDa, and no protein impurity was detected

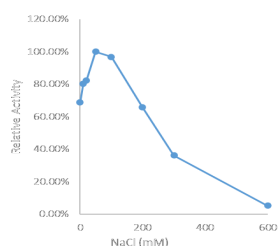
2. SEC-HPLC purity determination



SEC-HPLC chromatograms

Size exclusion chromatography showed the nuclease purity with no aggregate formation.

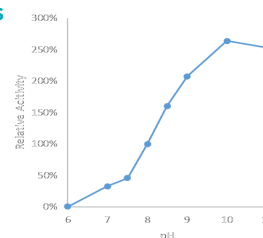
3. Effect of Na⁺ on Pannarase enzyme activity



Enzyme activity test at different sodium ion concentrations

Pannarase was highly active at moderate Na⁺ concentrations, and was 36.2% under 300 mM NaCl condition.

4. Comparison of Pannarase enzyme activity at different pH conditions



Enzyme activity test under different PH conditions

The optimum pH range for Pannarase salt active nuclease activity is 8.0 – 11.0.

Order Options

Cat No.	Grade	Name	Size
CYG002F0010	GMP Grade	Pannarase Nucleases	100,000 U
CYG002F0050	GMP Grade	Pannarase Nucleases	500,000 U
CYG002F0500	GMP Grade	Pannarase Nucleases	5,000,000 U
CY002F0010	RUO(Research Use Only) Grade	Pannarase Nucleases	100,000 U
CY002F0050	RUO(Research Use Only) Grade	Pannarase Nucleases	500,000 U
CY002F0500	RUO(Research Use Only) Grade	Pannarase Nucleases	5,000,000 U