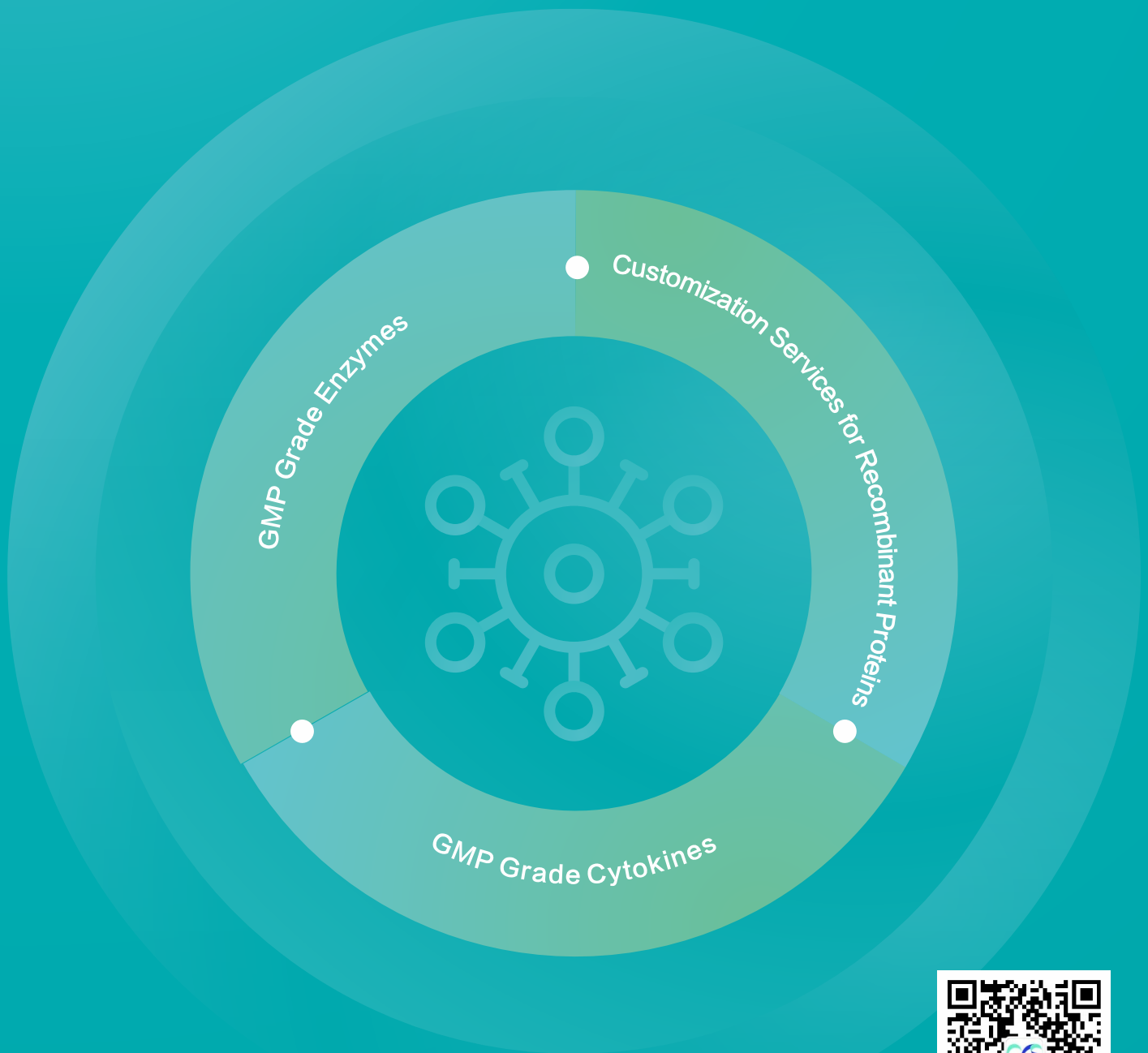


# Products and Service

---

# Brochure



## Convert innovative biotechnology into economically reliable solutions to create value together with customers

Shanghai Chaselection Biotechnology Co., Ltd., located in Shanghai Pilot Free Trade Zone, is a ISO 9001 certified high-tech enterprise specialized in the R&D and sales of recombinant proteins.

Always adhering to the customer-oriented concept, Chaselection has been strived to make breakthroughs in many key technologies related to the structural design, purification process and stable dosage form of recombinant proteins. The directional protein denaturation and renaturation technique can transform the denatured solid protein expressed in E.coli into highly active soluble protein. By virtue of technical advantages, the company establishes short and controllable R&D cycle for new product, providing guarantee for the high-quality and efficient of recombinant proteins, and reducing cost and increasing efficiency for enterprise production.

Since its establishment, the company has successfully developed more than 30 highly active cytokines and a variety of highly active proteases, covering many aspects of biological processes including cell culture, virus purification and quality analysis. They can be widely used in scientific research, pharmaceutical production and IVD (in vitro diagnostic reagent) and other fields to meet the demands of different users.



# Contents

<b>1. Cell Culture Solution</b>	03
<b>01 Products for adherent cell digestion</b>	04
TrypLUS Cell Dissociation Solution	
Trypelectase Recombinant Trypsin	
Trypelectase Recombinant Bovine Trypsin	
<b>02 Cytokines</b>	06
Cytokine Series	
<hr/>	
<b>2.Virus purification and detection products</b>	09
Pannarase Nucleases	
Pannarase Salt Active Nuclease	
Pannarase Nucleases ELISA detection Kit	
<hr/>	
<b>3.Products for bioluminescence imaging</b>	12
D-Luciferin Potassium Salt	
Luciferase Report Gene Assay Kit	
<hr/>	
<b>4.Customization services for recombinant proteins</b>	15



## Products For Adherent Cell Digestion

# TrypLUS Cell Dissociation Solution (DMF Filed)

A ready-to-use, animal-free original, stable and mild digestive solution, which can be stored at room temperature.

## Product Introduction

TrypLUS Cell Dissociation Solution is a trypsin-like enzyme with similar dissociation kinetics, higher stability, higher purity, milder digestion, and lower cytotoxicity compared to trypsin.

## Product Advantages

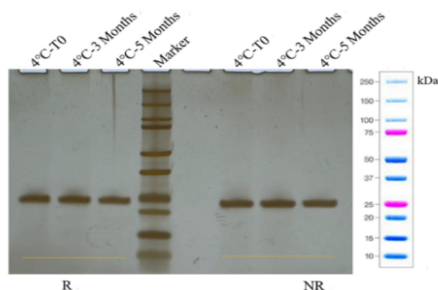
- Mild digestion providing better protection to cells
- Ready-to-use, stable at room temperature
- Non-animal origin, minimizing extraneous contamination
- Wide range of applications, suitable for serum and serum-free culture

## Product Application

Digestion and dissociation of tissue blocks, acquisition of primary cells, passage digestion and harvest of adherent cells, digestion and harvest of cells cultured by microcarrier methods

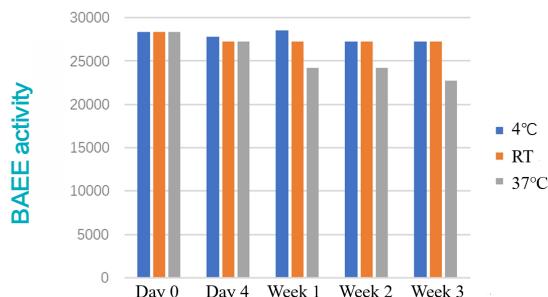
## Test Data

### 4°C Stability test



Change in purity by SDS-PAGE at 4°C for 3 and 5 months

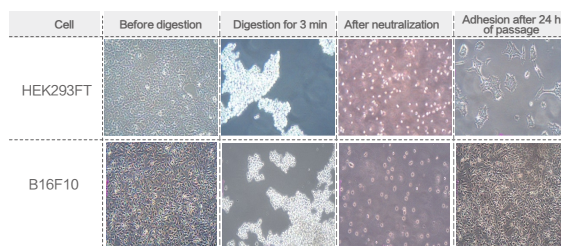
Protein purity tests by reduced (R) and non-reduced (NR) SDS-PAGE for TrypLUS Cell Dissociation Solution placed at 4°C for 5 months showed no degradation or aggregation.



Change in TrypLUS activity at different temperatures over three weeks

TrypLUS Cell Dissociation Solution can be stored at 4°C and room temperature for a long time, and 80% enzyme activity can be kept at 37°C for 1 week.

### Cell digestion test



Digestion effect of TrypLUS Cell Dissociation Solution

HEK293FT and B16F10 were digested for 3 min by TrypLUS Cell Dissociation Solution, and the results showed good digestive performance and high cell viability.

## Order Options

Cat. No.	Grade	Name	Size
CYG016R0100	GMP Grade	TrypLUS Cell Dissociation Solution	100 ml
CYG016R0500	GMP Grade	TrypLUS Cell Dissociation Solution	500 ml
CY016R0100	RUO(Research Use Only) Grade	TrypLUS Cell Dissociation Solution	100 ml
CY016R0500	RUO(Research Use Only) Grade	TrypLUS Cell Dissociation Solution	500 ml
CYG020R0100	GMP Grade	TrypLUS Cell Dissociation Solution (10X)	100 ml
CYG020R0500	GMP Grade	TrypLUS Cell Dissociation Solution (10X)	500 ml
CY020R0100	RUO(Research Use Only) Grade	TrypLUS Cell Dissociation Solution (10X)	100 ml
CY020R0500	RUO(Research Use Only) Grade	TrypLUS Cell Dissociation Solution (10X)	500 ml



## Products for adherent cell digestion

# Trypelectase Recombinant Trypsin

A GMP Grade non-animal-derived trypsin that meets pharmacopoeia requirements.

### Product Introduction

Trypelectase recombinant trypsin is an animal origin-free recombinant enzyme alternative to porcine trypsin for the dissociation of attachment-dependent cell lines from plasticware. The protein sequence is same as porcine trypsin.

Our product is manufactured under scalable cGMP conditons. The manufacture site has an ISO13485-certified quality management system. Trypelectase recombinant trypsin which with high quality can help move your stem cell, vaccine and Virus packaging research toward the clinic.

### Product Advantages

- ▶ GMP Grade and consistent with USP,ChP standard
- ▶ Continuous and stable production between batches
- ▶ Great efficient in cell dissociation
- ▶ Animal origin-free product
- ▶ High purity, high specific activity

### Product Application

Digestion and dissociation of tissue blocks, acquisition of primary cells, passage digestion and harvest of adherent cells, digestion and harvest of cells cultured by microcarrier methods

### Test Data

#### Cell Dissociation Testing

CT26.WT and HEK293FT were well-dissociated after digestion in 3min by Trypelectase recombinant trypsin, and cell viability results indicated that they had less damage to the cells and did not affect cell passage culture.

Cell	Viability	Concentration	Digestion time
CT26.WT	98%	0.05% ( m/V )	3min ± 0.04
HEK293FT	97%	0.05% ( m/V )	3min ± 0.04

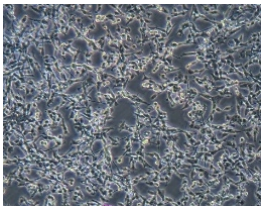
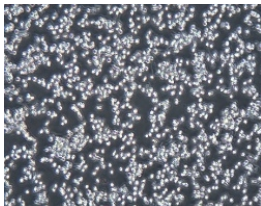
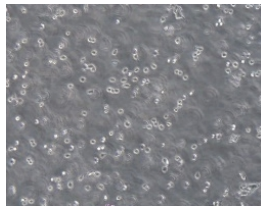
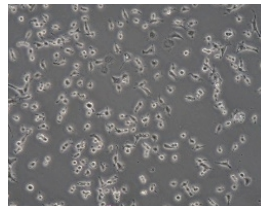
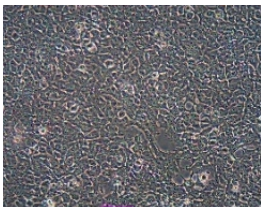
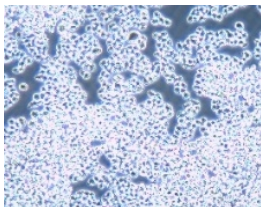
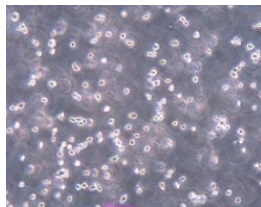
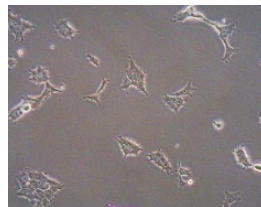
Cell	Before digestion	Digestion for 3 min	After neutralization	Adhesion after 24 h of passage
CT26.WT				
HEK293FT				

Figure. Trypelectase recombinant porcine trypsin cell digestion process and cell adhesion after 24 h of passage

### Order Options

Cat.NO.	Name	Size
CYG005F0001	Trypelectase Recombinant Trypsin	1g
CYG005F0010	Trypelectase Recombinant Trypsin	10g

Products for adherent cell digestion

Trypelectase Recombinant Bovine Trypsin

A highly active and purified, non-animal-derived pancreatic enzyme for cell digestion and insulin cleavage

Product Introduction

Trypelectase, a recombinant bovine trypsin, has amino acid sequences identical to that of bovine pancreatic trypsin. It is manufactured by recombinant expression in Escherichia coli (E.coli). Based on its high activity and purity, Trypelectase is widely used in the preparation of third-generation insulin in China and overseas.

Product Advantages

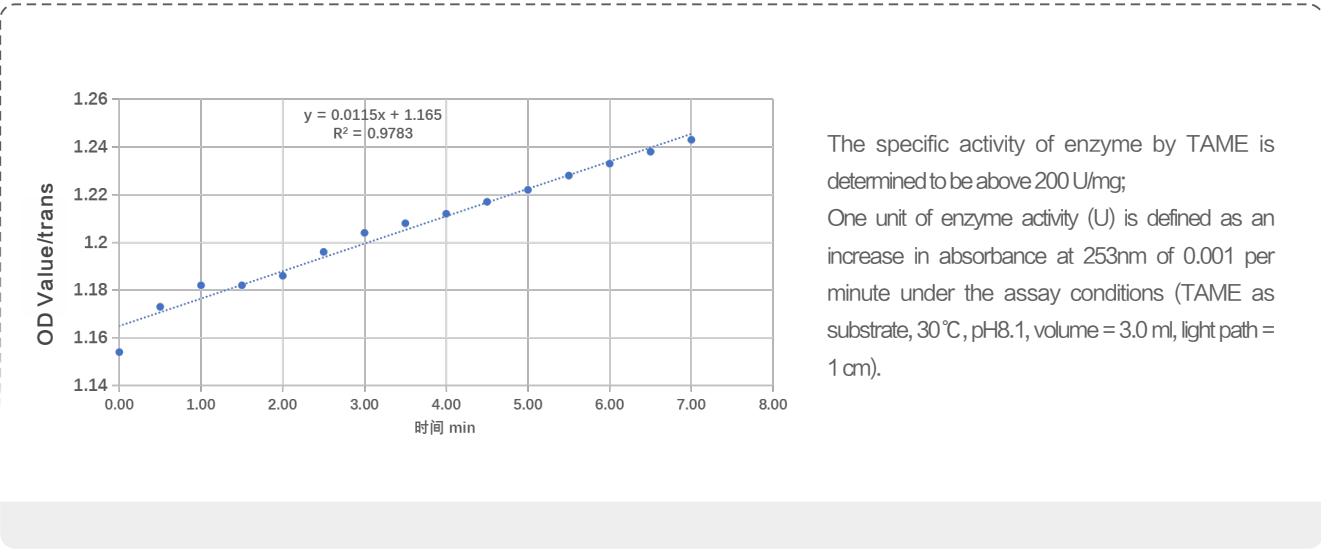
- Manufactured in a GMP Grade facility in compliance with pharmacopoeial standards
- High specificity in insulin cleavage
- Halal biologics
- Manufactured by recombinant expression, free of animal-derived materials
- High purity, free of enzyme impurities

Product Application

Protein cleavage in adherent cell digestion, insulin production, proteomics studies

Test Data

Enzyree-activity by TAME



Order Options

Cat. No.	Name	Size
CYG004F0001	Trypelectase Recombinant Bovine Trypsin	1g
CYG004F0010	Trypelectase Recombinant Bovine Trypsin	10g

Provide classic products in pursuit of high quality

## CHASELECTION cytokine series

## Product Introduction

Based on the GMP-Grade quality management system, Chaselection can provide GMP-Grade cytokines such as interleukins, TGF- $\beta$  family, tumor necrosis factors (TNF), colony stimulating factors (CSF). With more stringent quality management and release testing standards, Chaselection can support the pre-clinical research of drugs for immune cell therapy and accelerate the application process for clinical trials and commercialization.

## Cytokines used in different fields

Cell	Cytokine
T cell culture	IFN- $\gamma$ 、IL-17ax IL-2、IL-7、IL-15
DC cell culture	IL- $\beta$ 、ILT、GM-CSF、TNF $\alpha$
NK cell culture	IL-2, IL-5、IL-15、IL-21、IL-7
CAR-T cell culture	IL-2、IL-7、IL-15
Stem cell culture	IL-3、IL-6、bFGFs EGF、PDGF-BB、SCF、LIF、mLIF、VEGFA、4-1BBLigand IL-33、Flt3-Ugand、GDF15 PDGF-AA、

## Product Advantages

- Non-tag purification, avoiding contamination by metal ions
- High specificity and purity
- Both GMP Grade and RUO(Research Use Only) Grade products are available
- Full coverage of various cell cultures
- Specifications can be customized as needed.

## Order Options

Type	Grade	Cat. No.	Size ( $\mu$ g)
Interleukin (IL)			
IL-7	RUO(Research Use Only) Grade	CY022F0020	20
		CY022F050	50
	GMP Grade	CYG022F0050	50
		CYG022F050	500
IL-21	RUO(Research Use Only) Grade	CY025F0020	20
		CY025F050	50
	GMP Grade	CYG025F0050	50
		CYG025F0500	500
IL-3	RUO(Research Use Only) Grade	CY021F0020	20
		CY021F050	50
	GMP Grade	CYG021F0050	50
		CYG021F0500	500
IL-4	RUO(Research Use Only) Grade	CY041F0020	20
		CY041F050	50
	GMP Grade	CYG041F0050	50
		CYG041F0500	500
IL-6	RUO(Research Use Only) Grade	CY042F0020	20
		CY042F050	50
	GMP Grade	CYG042F0050	50
		CYG042F0500	500
IL-18	RUO(Research Use Only) Grade	CY044F0020	20
		CY044F050	50
	GMP Grade	CYG044F0050	50
		CYG044F0500	500

Type	Grade	Cat. No.	Size (µg)
Growth factor (GF)			
bFGF	RUO(Research Use Only) Grade	CY024F0020	20
		CY024F050	50
	GMP Grade	CYG024F0050	50
		CYG024F0500	500
Tumor necrosis factor (TNF)			
TNF- α	RUO(Research Use Only) Grade	CY052F0020	20
		CY052F050	50
	GMP Grade	CYG052F0050	50
		CYG052F0500	500
Colony-stimulating factor (CSF)			
GM-CSF	RUO(Research Use Only) Grade	CY023F0020	20
		CY023F050	50
	GMP Grade	CYG023F0050	50
		CYG023F0500	500
Interferon (IFN)			
IFN- γ	RUO(Research Use Only) Grade	CY037F0020	20
		CY037F050	50
	GMP Grade	CYG037F0050	50
		CYG037F0500	500
Other products	Please reach out by support@chaselection.com		

### CHASELECTION IL-2 Pro

IL-2 with high solubility

#### Product Introduction

IL-2 Pro, a modified human interleukin 2, has a more significant solubility in water than wild-type hIL-2. In solubility test, IL-2 Pro is 20-fold concentration more than wt IL-2 in neutral pH solution.

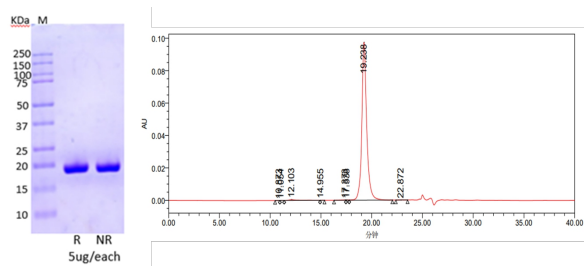
IL-2 Pro achieves high solubility on the basis of activity retention, and is more suitable to use in process and R&D development.

#### Product Advantages

- High purity, better specificity
- High solubility, better batch-to-batch stability
- Animal origin-free (AOF)
- GMP Grade available
- No SDS in purification process, less cell damage.

#### Test Data

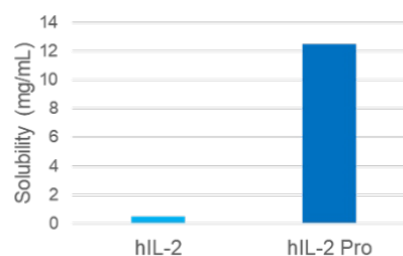
##### 1. SDS-PAGE and SEC-HPLC purity determination



IL-2 Pro SDS-PAGE (left) and SEC-HPLC (right) purity analysis

Non-reduced and reduced SDS-PAGE results showed that molecular weight of IL-2 Pro was about 17 kDa, and no protein impurity was detected (left); SEC-HPLC showed protein with high purity, and no aggregate formation (right).

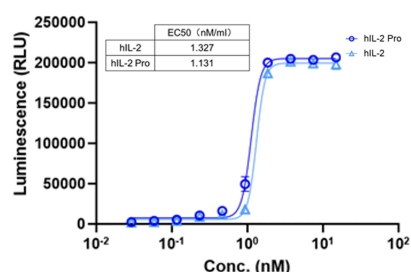
##### 2. Solubility determination



Solubility comparison of IL-2 Pro and IL-2

In PBS solution at pH 7.4, IL-2 Pro concentration reached 12.5 mg/ml, 25-fold more than that of wt IL-2.

##### 3. Activity comparison



Bioactivity Comparison of IL-2 Pro and IL-2 (tested by CTLL-2 cell)

The cell activity test of mouse T lymphocytes (CTLL-2) showed that the bioactivity of IL-2 Pro was the same as wt IL-2.



## Cytokines

### CHASELECTION IL-15 Pro

IL-15 with ultra-high bioactivity

#### Product Introduction

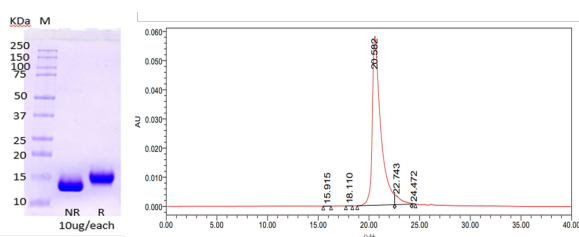
IL-15 Pro is a modified interleukin 15 with ultra-high bioactivity obtained by precise molecular design, which solves the problem of poor stability and easy formation of isoforms during IL-15 production. The purification process of IL-15 Pro does not rely on reversed-phase chromatography and can make IL-15 Pro more stable in solution. IL-15 Pro shows a 100-fold increase in affinity for IL-15 receptor and a 20-fold increase in NK cell proliferation compared with the wt IL 15.

#### Product Advantages

- High activity for better cell stimulation
- Less likely to form isomers and more stable for batch to batch use
- High purity, more specificity
- GMP Grade available

#### Test Data

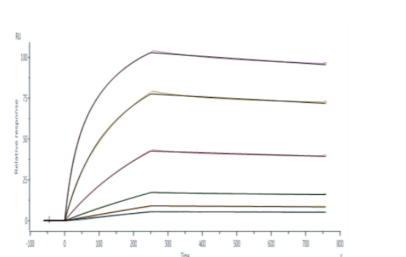
##### 1. SDS-PAGE and SEC-HPLC purity determination



IL-15 Pro SDS-PAGE (left) and SEC-HPLC (right) purity analysis

Non-reduced and reduced SDS-PAGE results showed that molecular weight of IL-15 Pro was about 15 kDa, and no protein impurity was detected (left); SEC-HPLC showed protein with high purity, and no aggregate formation (right).

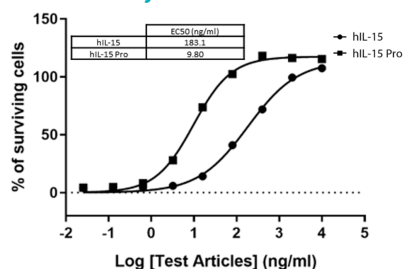
##### 2. L-15 Pro binding activity determination



Solubility comparison of IL-2Pro and IL-2

SPR result showed that L-15 Pro's affinity for IL-15 receptor was increased by 100-fold that of wt IL-15.

##### 3. IL-15 Pro cell viability determination



Ability of IL-15 Pro to induce proliferation of NK92 cells and data comparison with wild-type L-15

IL-15 Pro was able to increase the proliferation of NK cells (NK92) by 20 fold than wt IL-15.

#### Order Options

Name	Grade	Cat No.	Size (μg)
IL-2 Pro	RUO(Research Use Only) Grade	CY017F0020	20
		CY017F050	50
	GMP Grade	CYG017F0050	50
		CYG017F0500	500
IL-15 Pro	RUO(Research Use Only) Grade	CY018F0020	20
		CY018F050	50
	GMP Grade	CYG018F0050	50
		CYG018F0500	500

## Virus purification and detection products

### Pannarase Nucleases

Effective viscosity reduction and removal of nucleic acids from protein solutions

#### Product Introduction

Pannarase Nuclease is a genetically engineered endonuclease from *Serratia marcescens*, which can completely digest nucleic acids to 5'–monophosphate terminated oligonucleotides 2 to 5 bases in length. It degrades all forms of DNA and RNA (single stranded, double stranded, linear and circular) while having no proteolytic activity.

The enzyme is functional between pH 6 and 10 and from 0–42°C. The ability of Pannarase to rapidly hydrolyze nucleic acids makes the enzyme an excellent choice for viscosity reduction to reduce processing time and increase yields of protein.

#### Product Advantages

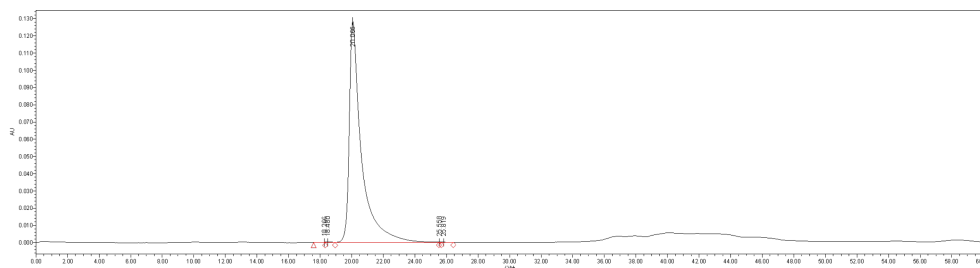
- Animal origin-free, without ampicillin
- High purity(>99%), Excellent unit enzyme activity
- Advanced manufacturing process, non-traditional His-tag purification, exclusion of metal ion risks
- Low endotoxin level and strict quality control criteria to ensure unit enzyme activity and batch-to-batch stability

#### Product Application

Widely used in virus purification processes, such as lentivirus, adenovirus, lysovirus, etc. Removal of nucleic acids from biological products. Reduce the viscosity of cell lysates and cell supernatants to saving processing time and improve protein yields

#### Test Data

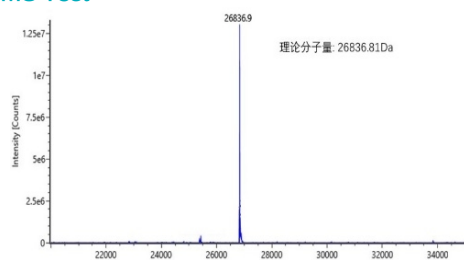
##### SEC-HPLC purity determination



Pannarase SEC-HPLC purity analysis

SEC-HPLC result showed no aggregate formation, and the purity reached 99.72%.

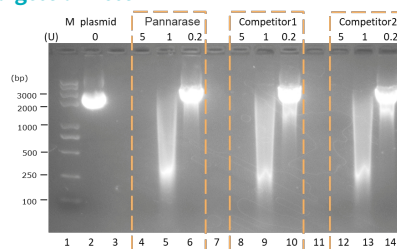
##### LC-MS Test



Pannarase LC-MS chromatograms

As analyzed by LC-MS, the protein molecule was consistent with the theoretical value, there was no impurity peak, and the structure was homogeneous.

##### Enzyme digestion Test



Comparison of digestion of nucleases from different brands

The plasmid DNA concentration was 1 mg/ml in the 20  $\mu$ L reaction system. Compared with competitors, Pannarase Nuclease had excellent digestion activity.

#### Order Options

Cat No.	Grade	Name	Size
CYG002F0010	GMP Grade	Pannarase Nucleases	100,000 U
CYG002F0050	GMP Grade	Pannarase Nucleases	500,000 U
CYG002F0500	GMP Grade	Pannarase Nucleases	5,000,000 U
CY002F0010	RUO(Research Use Only) Grade	Pannarase Nucleases	100,000 U
CY002F0050	RUO(Research Use Only) Grade	Pannarase Nucleases	500,000 U
CY002F0500	RUO(Research Use Only) Grade	Pannarase Nucleases	5,000,000 U

Provide classic products in pursuit of high quality

# Pannarase Salt Active Nuclease

## Product Introduction

Pannarase Salt Active Nuclease(SAN) is a non-specific endonuclease that degrades any form of DNA and RNA (linear, circular, supercoiled) into 3'-mononucleotides and dinucleotides. This nuclease can maintain high bioactivity under broad salt concentrations and alkaline pH conditions.

## Product Advantages

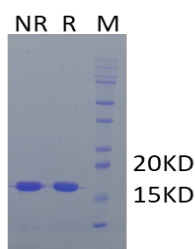
- Animal origin-free, without ampicillin
- Advanced manufacturing process, non His-tag, exclusion of metal ion risk
- Higher salt tolerant (0–500 mM NaCl), broad pH range (7.0–11.0)
- Strict quality control criteria to ensure unit enzyme activity and batch-to-batch stability

## Product Application

Remove of nucleic acids at high Na<sup>+</sup> concentration and high pH environment

## Test Data

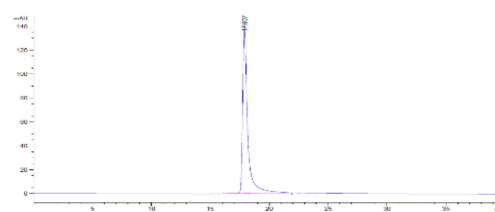
### 1. SDS-PAGE purity determination



SDS-PAGE electropherograms

Non-reduced and reduced SDS-PAGE result showed that molecular weight of IL-15 Pro was about 15 kDa, and no protein impurity was detected

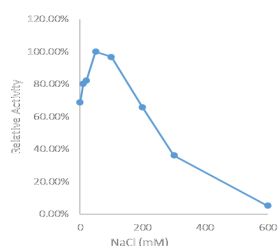
### 2. SEC-HPLC purity determination



SEC-HPLC chromatograms

Size exclusion chromatography showed the nuclease purity with no aggregate formation.

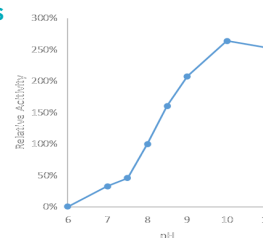
### 3. Effect of Na<sup>+</sup> on Pannarase enzyme activity



Enzyme activity test at different sodium ion concentrations

Pannarase was highly active at moderate Na<sup>+</sup> concentrations, and was 36.2% under 300 mM NaCl condition.

### 4. Comparison of Pannarase enzyme activity at different pH conditions



Enzyme activity test under different PH conditions

The optimum pH range for Pannarase salt active nuclease activity is 8.0 – 11.0.

## Order Options

Cat No.	Grade	Name	Size
CYG002F0010	GMP Grade	Pannarase Nucleases	100,000 U
CYG002F0050	GMP Grade	Pannarase Nucleases	500,000 U
CYG002F0500	GMP Grade	Pannarase Nucleases	5,000,000 U
CY002F0010	RUO(Research Use Only) Grade	Pannarase Nucleases	100,000 U
CY002F0050	RUO(Research Use Only) Grade	Pannarase Nucleases	500,000 U
CY002F0500	RUO(Research Use Only) Grade	Pannarase Nucleases	5,000,000 U

# Pannarase Nuclease ELISA Detection Kit

A highly sensitive, stable and compatible nuclease residue assay kit

## Product Introduction

Pannarase Nuclease ELISA detection kit is specially designed for the detection of Pannarase nuclease residues. The direct coating of antibodies ensures the high sensitivity and detection stability. It can meet the requirements of nuclease residues in the purification process or final products.

## Product Advantages

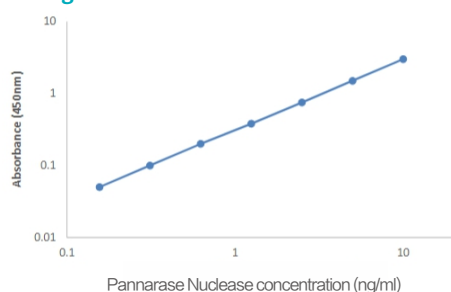
- Wide linear range
- Good accuracy and high precision
- Compatible with multiple brands of nucleases (like Benzonase)
- Good stability and repeatability

## Product Application

Widely used in nuclease residue detection of virus purification processes.

## Test Data

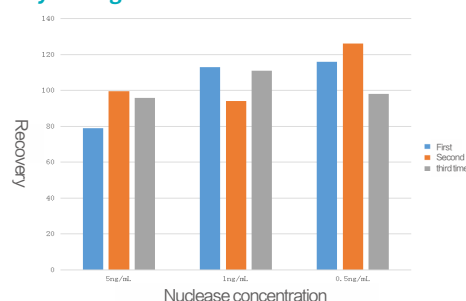
### 1. Linear range



Standard curve of nuclease concentration

Wide linear range from 0.2 ng/ml to 10 ng/ml; Residual amount could be detected at routine working concentrations of 10–20 U/ml without dilution.

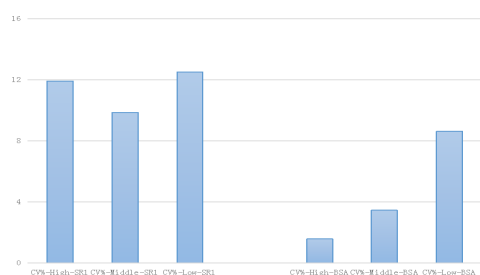
### 2. Accuracy testing



Recovery at three different nuclease concentrations

The test showed high recovery by the addition of Pannarase nuclease at low, medium and high concentrations.

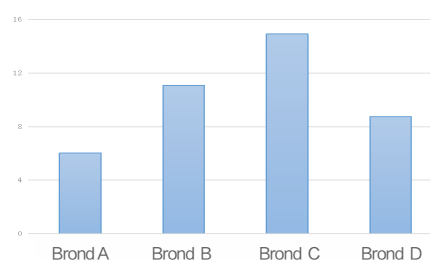
### 3. Precision testing



CV% comparison of reference substance vs 1% BSA at different concentrations

At high, medium and low concentration, both reference SR1 (Pannarase nuclease standard) and 1% BSA (supplemented with Pannarase nuclease standard) showed CV% of < 15%, with high precision and repeatability.

### 4. Nuclease compatibility testing of different brands



Comparison of nuclease test results of four brands by assay kit

The kit can respond to all brands of nucleases, and the test results showed high stability and reproducibility.

## Order Options

Cat No.	Name	Size
CYG003RKIT	Pannarase Nuclease ELISA detection kit	1 KIT 96 Tests

Provide classic products in pursuit of high quality

# Luciferase Reporter Gene Assay System

## Product Introduction

Firefly luciferase catalyzes the oxidative carboxylation of luciferin in the presence of oxygen, ATP and  $Mg^{2+}$ , releasing optical signals, which is a highly efficient luminescence reaction and is therefore designed to detect and quantify the expression of firefly luciferase in mammalian cells.

CHASELECTION luciferase reporter gene assay kits are used to accurately, sensitively and efficiently determine the activity of firefly luciferase, and to perform high-throughput drug screening, drug activity detection, large-scale promoter function determination, signal pathway and other researches.

## Multiple Varieties/Addressing Various Needs

Three assay systems have been launched to meet different focus needs of reporter gene assay.

### Enhanced Luciferase Assay Kit

- ✓ Balance time and luminous intensity to suit various application scenarios
- ✓ Selection of high throughput and ultra-high throughput detection

### Hypersensitive Luciferase Assay Kit

- ✓ Providing ultra-high intensity luminescence to make detection results more intuitive
- ✓ Suitable for automated continuous sample processing

### Stable Luciferase Assay Kit

- ✓ Providing continuous luminescence to get more time for testing
- ✓ Longer half-life and more stable optical signal
- ✓ Ideal choice for batch testing

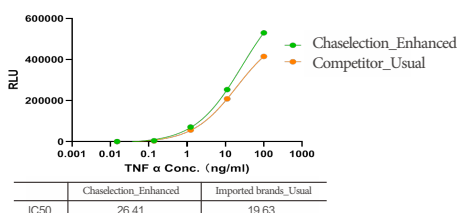
## Product Advantages

### High detection sensitivity and good signal stability

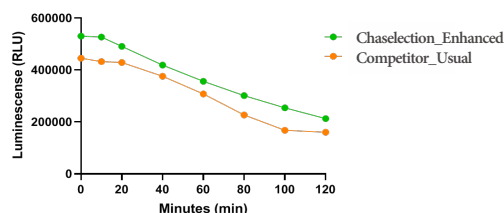
After adding gradient diluted TNF  $\alpha$  to HEK293-NF  $\kappa$  B-LUC cells and stimulation for 6 hours at 37°C and 5%  $CO_2$ , signal detection were performed using enhanced, hypersensitive, stable assay reagents respectively.

Enhanced

#### TNF $\alpha$ Dose Response Curve

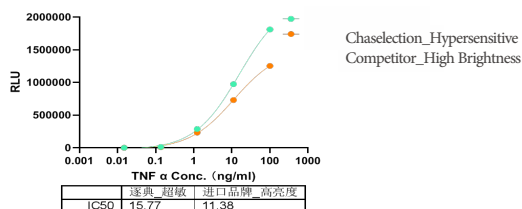


#### NF-KB Hek293 cells

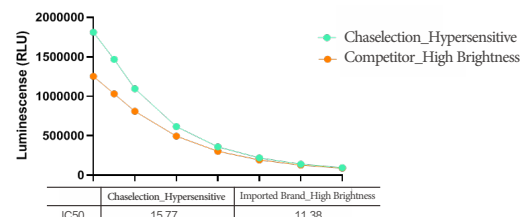


Hypersensitive

#### TNF $\alpha$ Dose Response Curve

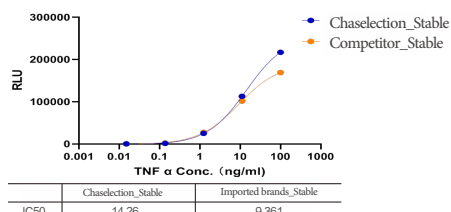


#### NF-KB Hek293 cells

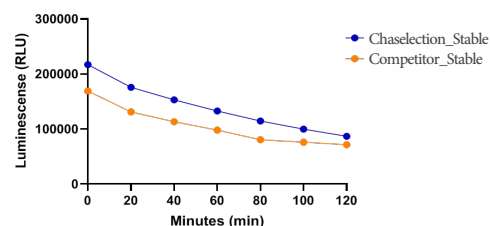


Stable

#### TNF $\alpha$ Dose Response Curve



#### NF-KB Hek293 cells





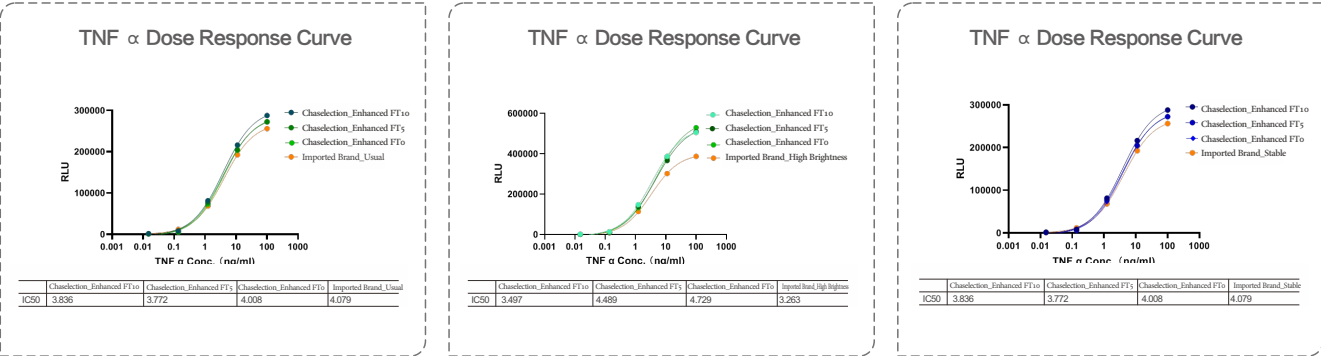
Easy to use

Simply mix the substrate with luciferase assay buffer and add the mixture directly to the cells.



Good Stability

The full series of Chaselection reporter gene assay kits showed high stability in 10 repeated freeze–thaw experiments.



Order Options

Cat No.	Name	Size
CY058F0010KIT	Enhanced Luciferase Reporter Gene Assay Kit	100 Test
CY058F0100KIT	Enhanced Luciferase Reporter Gene Assay Kit	1000 Test
CY058F1000KIT	Enhanced Luciferase Reporter Gene Assay Kit	10000 Test
CY059F0010KIT	Hypersensitive Luciferase Reporter Gene Assay Kit	100 Test
CY059F0100KIT	Hypersensitive Luciferase Reporter Gene Assay Kit	1000 Test
CY059F1000KIT	Hypersensitive Luciferase Reporter Gene Assay Kit	10000 Test
CY060F0010KIT	Stable Luciferase Reporter Gene Assay Kit	100 Test
CY060F0100KIT	Stable Luciferase Reporter Gene Assay Kit	1000 Test
CY060F1000KIT	Stable Luciferase Reporter Gene Assay Kit	10000 Test

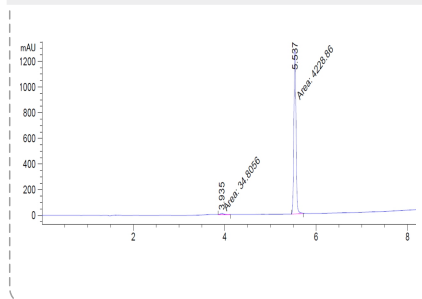
# D-luciferin potassium salt

The luminescence produced by the reaction of luciferase with luciferin substrate is mostly used in bioluminescence imaging. The use of luciferase gene to label cells and the detection of fluorescence intensity after injection of luciferase substrate allow real-time monitoring of the growth of target cells and the drug medication effect. Since ATP is also involved in the fluorescence reaction, the effect of ATP on the system can also be introduced to indicate energy or life state.

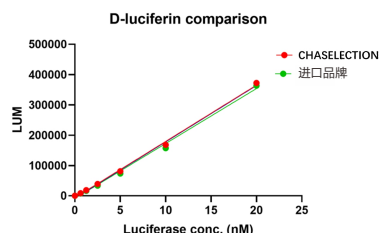
Principle: Luciferase catalyzes the oxidative decarboxylation of D-luciferin potassium salt in ATP,  $Mg^{2+}$  and  $O_2$ , and emits blue-green fluorescence with a wavelength of 560 nm on average. The number of photons produced by adding excess luciferin potassium salt is positively correlated with the concentration of luciferase. Easy operation and accurate quantification make it very widely used in biotechnology, especially in the field of in vivo imaging and reporter gene technology.

## Product Advantages

### High purity (HPLC-verified purity ≥99%)



### Excellent bioluminescence performance



### High solubility (> 40 mg/mL)

Free acid luciferin has poor solubility, while those in potassium salt form showed good water solubility. The high purity D-luciferin potassium salt developed by Chaselection has a solubility in water up to 40 mg/mL or above.

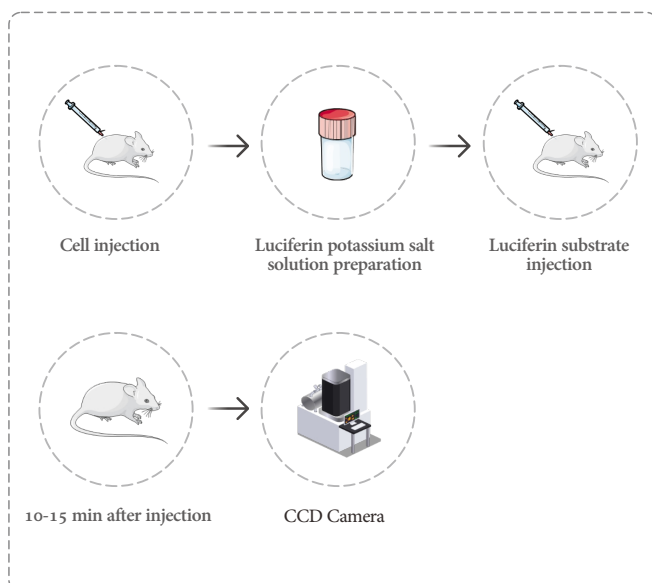
## Product Application

● In vivo imaging

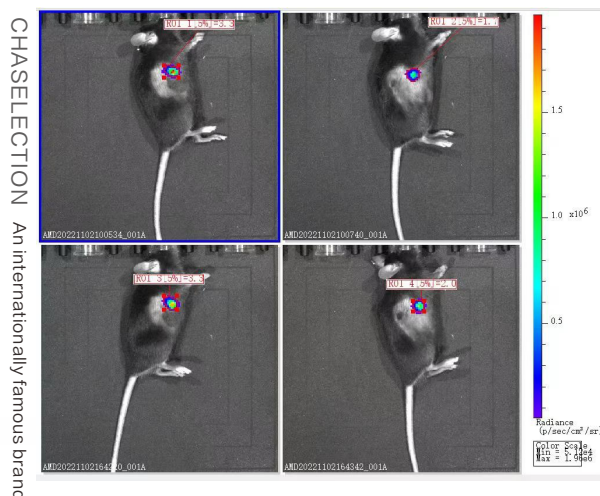
● Reporter gene assay

● Cell viability testing

## Procedures for use in vivo imaging



## Example of vivo imaging



## Order Options

Cat No.	Name	Size
CY057F0100	D-luciferin potassium salt	0.1g
CY057F1000	D-luciferin potassium salt	1g

## Customization services for recombinant proteins

We provide complete technology and comprehensive services from gene cloning, protein expression, strain fermentation, protein purification, lyophilized preparation and quality control.

From project application, molecular biology design, process development/patent application to obtaining the final finished recombinant protein, the process can be transferred or bought as a whole. You can also purchase the product only. You can chose from multiple service models to cooperate with us at any of the above aspects.



### Technology Platform

Have a complete technology platform for gene cloning, protein expression, strain fermentation, protein purification, lyophilized preparation and quality control.



### Technical Support

With experience and technical accumulation in the development of all types of recombinant proteins, we provide a full range of technical support.



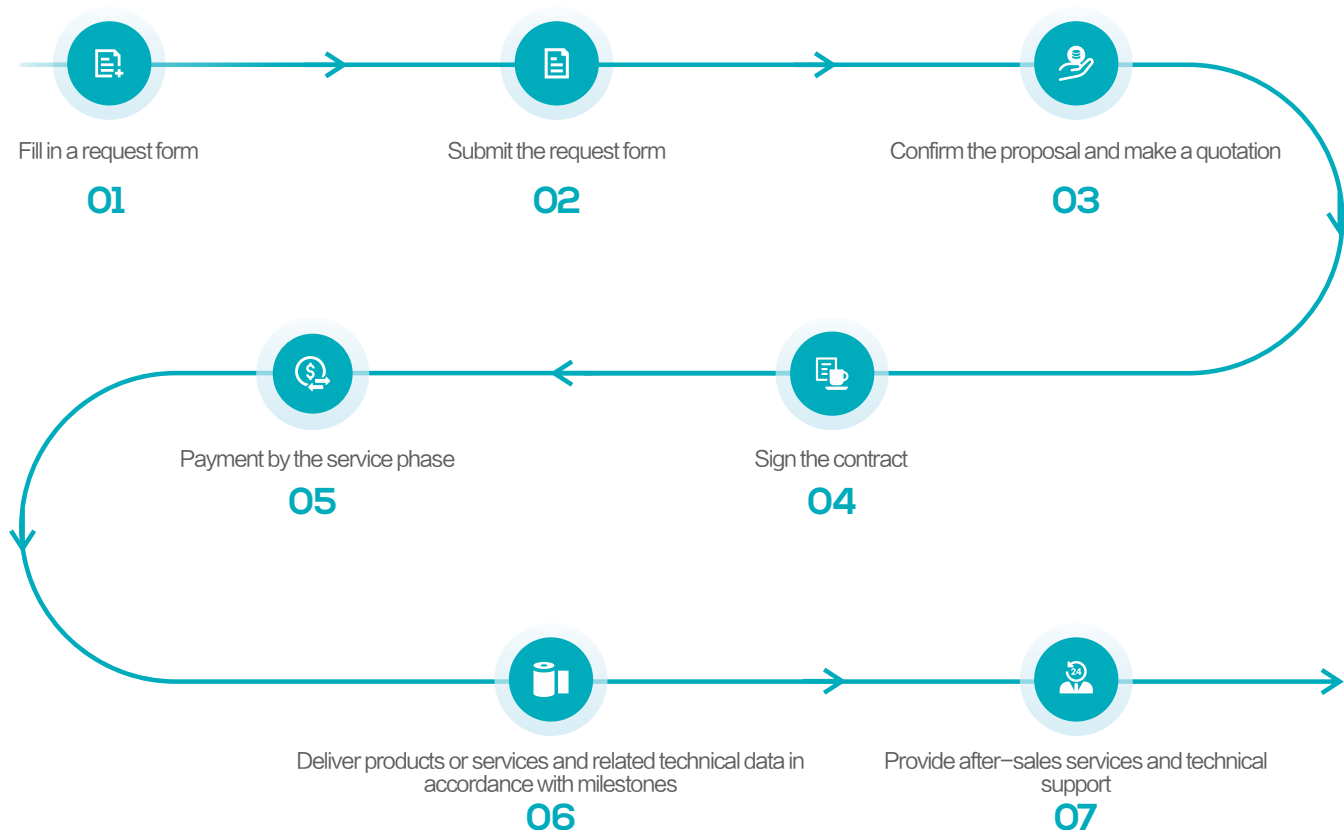
### Quality Control

GMP-grade protein expression and purification system covering thousands of square meters ensures the ability of production and quality control of kilogram-level GMP recombinant protein.



### Customization Process

Provide the whole-process development services from gene synthesis to protein expression, fermentation, and purification.



Provide classic products in pursuit of high quality

CHASELECTION  
**CHASELECTION**  
CHASELECTION  
**CHASELECTION**  
CHASELECTION  
CHASELECTION  
CHASELECTION

## Contact Us

### Shanghai Chaselection Biotechnology Co., Ltd.

📍 2nd Floor, Building 13, Pudong International Talent Port, Lane 999, Huanke Road, Pudong New Area, Shanghai, China  
☎ 021-52238066

### Hangzhou Chaselection Biotechnology Co., Ltd.

📍 Room 1005, Building 1, Jiabao Science and Technology Innovation Center, No. 519, No. 2 Street, Qiantang New District, Hangzhou, China  
☎ 0571-86630817

🌐 [www.chaselection.com](http://www.chaselection.com)

✉ [Marketing@chaselection.com](mailto:Marketing@chaselection.com) [support@chaselection.com](mailto:support@chaselection.com)